

Original Instructions

Operating Instructions



Model DHB3SS-15WA
Dedicated Holding Bin

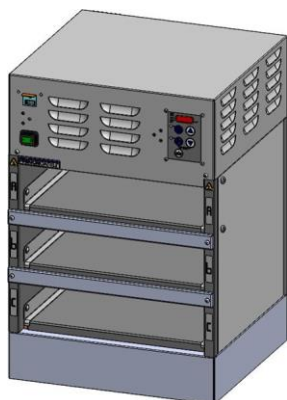


TABLE OF CONTENTS

Safety Information	1
Electrical Specifications	1
Installation	2
Operation	2
Control Panel	3
Adjusting Setpoints	3
Cleaning	4
Exploded View and Parts List	5
Troubleshooting	6
Wiring Diagram	7
Revision Log	8

LIMITED WARRANTY

This product is warranted to be free from defects in material and/or workmanship for a period of 2 years from date of original installation, not to exceed 30 months from the date of manufacture.

Any component which proves to be faulty in material and/or workmanship will be replaced or repaired (at the option of Prince Castle, LLC) without cost to the customer for parts and labor. This warranty covers on location service (i.e. trip charges and or mileage). Travel mileage is limited to 100 miles (200 kilometers) round trip (one trip warranty) from an authorized service agency or its sub-service agency.

- This warranty is subject to the following exceptions/conditions:
- Use of any non-genuine Prince Castle parts voids this warranty.
- All labor to be performed during regular work hours. Overtime premium (the incremental amount) will be charged to the customer.
- Damage caused by carelessness, neglect and/or abuse (e.g., dropping, tampering or altering parts, equipment damaged in shipment, by fire, flood or an act of God) is not covered under this warranty.
- All problems due to operation at voltages other than that specified on equipment nameplates are not covered by this warranty. Conversion to correct voltage is the customer's responsibility.
- This equipment must be serviced by Prince Castle Authorized Service Agency or a Prince Castle Service Technician during the warranty period.



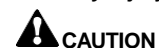
355 East Kehoe Blvd. • Carol Stream, IL 60188 USA
Telephone: 630-462-8800 • Toll Free: 1-800-PCASTLE
Fax: 630-462-1460 • www.princecastle.com

Safety Information



WARNING

Indicates information important to the proper operation of the unit. Failure to observe may result in damage to the equipment and/or severe bodily injury or death.



CAUTION

Indicates information important to the operation of the unit. Failure to observe may result in damage to the equipment.

IMPORTANT: Prince Castle reserves the right to change specifications and product design without notice. Such revisions do not entitle the buyer to corresponding changes, improvements, additions or replacements for previously purchased equipment.

Electrical Specifications

DHB3SS-15WA: 110V, 50/60 Hz, 1200W, 20A



Installation

- 1 Unpack and inspect bin.** After you have removed the bin from the carton, inspect the unit for signs of damage. If there is damage to the unit:
 - Notify carrier within 24 hours after delivery.
 - Save carton and packing materials for inspection purposes.
 - Contact the Prince Castle Customer Sales Department at 1-630-462-8800 to arrange for a replacement to be sent.

- 2 Seal base to counter.** Place the bin on a counter and seal its base to the counter with food-approved sealant.

Note: When installing this unit, the ambient temperature at the mounting site should not exceed 100°F

- 3 Plug unit in.** Insert the power cord into a proper voltage receptacle. *NOTE: This should be a dedicated outlet. No other equipment should be operating on this line (i.e. fryers, refrigerators, etc.).*

- 4 Turn the power switch on.** Allow 20 minutes for warm-up.

Operation

- 1 View temperatures in Fahrenheit or Celsius.** Factory preset is set to display temperatures in Fahrenheit.
 - A. To change to Celsius, turn the power switches off. Press and hold the **DOWN** arrow then turn the power switch on and after two seconds, release the **DOWN** arrow button.
 - B. To change back to Fahrenheit, turn the power switch to the off position, press and hold the **UP** arrow and turn the power switch to the on position. After two seconds, release the **UP** arrow button.

- 2 View heater temperature.** There are three holding cavities. There is a top heater and a bottom heater in each cavity. The temperature of each heater is viewed and set independently.
 - A. To view the actual heater temperature, press the **ACTUAL TEMP** button. The LED indicator next to the **ACTUAL TEMP** button will light.
 - B. Press the **UP** or **DOWN** arrow button to select heaters.



CAUTION

Displayed temperatures are heater temperatures and do not indicate actual food temperatures.

Recommended Heater Temperatures

Shelf	Upper	Lower
A	210°F	225°F
B	205°F	225°F
C	205°F	225°F

Control Panel

CONTROL PANEL

1A The LED indicator next to the **UPR SHELF** indicates that the temperature being displayed is for an upper heater on a selected cavity.

1B The LED indicator next to the **PROG** is on when in the program mode.

1C The LED indicator next to the **LWR SHELF** indicates that the temperature being displayed is for the lower heater in a selected cavity.

1D The LED indicator next to the **HEAT** is on when power is applied to the heater.

1E The LED indicator next to **ACTUAL TEMP** is on when the actual temperature is being displayed.

1F The LED indicator next to **SETPOINT TEMP** is on when the setpoint temperature is being displayed.

SETPOINT: The setpoint temperature is displayed for the selected heaters when this button is pressed during the operating mode. The SETPOINT LED indicator in the display will be on when the Setpoint mode is selected. Press and hold the Prince Castle button then press and hold the SETPOINT button for 5 seconds to program the temperature for the selected heater.

ACTUAL TEMP: The actual temperature is displayed for the selected heaters when this button is pressed during the operating mode. The ACTUAL TEMP LED indicator in the display will be on when the actual temperature mode is selected.

UP ARROW and DOWN ARROW: When pressed in the operating mode, the display will scroll through the temperatures of the heaters. The LED next to the **UPR SHELF** or **LWR SHELF** will be on to indicate which heater is being selected. The letter **A**, **B**, or **C** is displayed for the selected cavity.

Adjusting Setpoints

NOTE: The temperature adjustment range for a heater zone is: OFF, 150°F to 275°F. Use the following procedure to change a setpoint temperature.

1 **Choose heater.** Press the **UP** or **DOWN** arrow button until the heater to be changed is selected. For upper heater, the LED next to the **UPR SHELF** is on, and for lower heater, the LED next to the **LWR SHELF** is on. After selecting the cavity, the left most character in the temperature display shows the cavity. The letter **A**, **B**, or **C** is displayed for the selected cavity.

2 **Activate Program mode.** To change the temperature of the selected zone, press and hold the **SETPOINT** button and press the **PRINCE CASTLE** button for 6 seconds. The LED indicator next to **PROG** will light to indicate the Program mode is active.

3 **Increase or decrease setpoint.** Use the **UP** and **DOWN** arrow buttons to increase or decrease the setpoint temperature.

4 **Save the new setpoint.** Press the **PRINCE CASTLE** button to exit the Program mode and store the setpoint temperature value (the LED next to **PROG** will turn off). The controller will regulate to the new setpoint temperature.

5 **Repeat steps 1-4 for remaining heaters.**

Cleaning



CAUTION

This bin is not watertight. Do not clean with water jet/jet spray. Do not immerse the bin in water.



CAUTION

Before unplugging the power cord, make sure the power switches are in the OFF position.

1

Unplug the power cord from the outlet.

2

Allow the bin to cool down. Wait approximately 25 minutes.

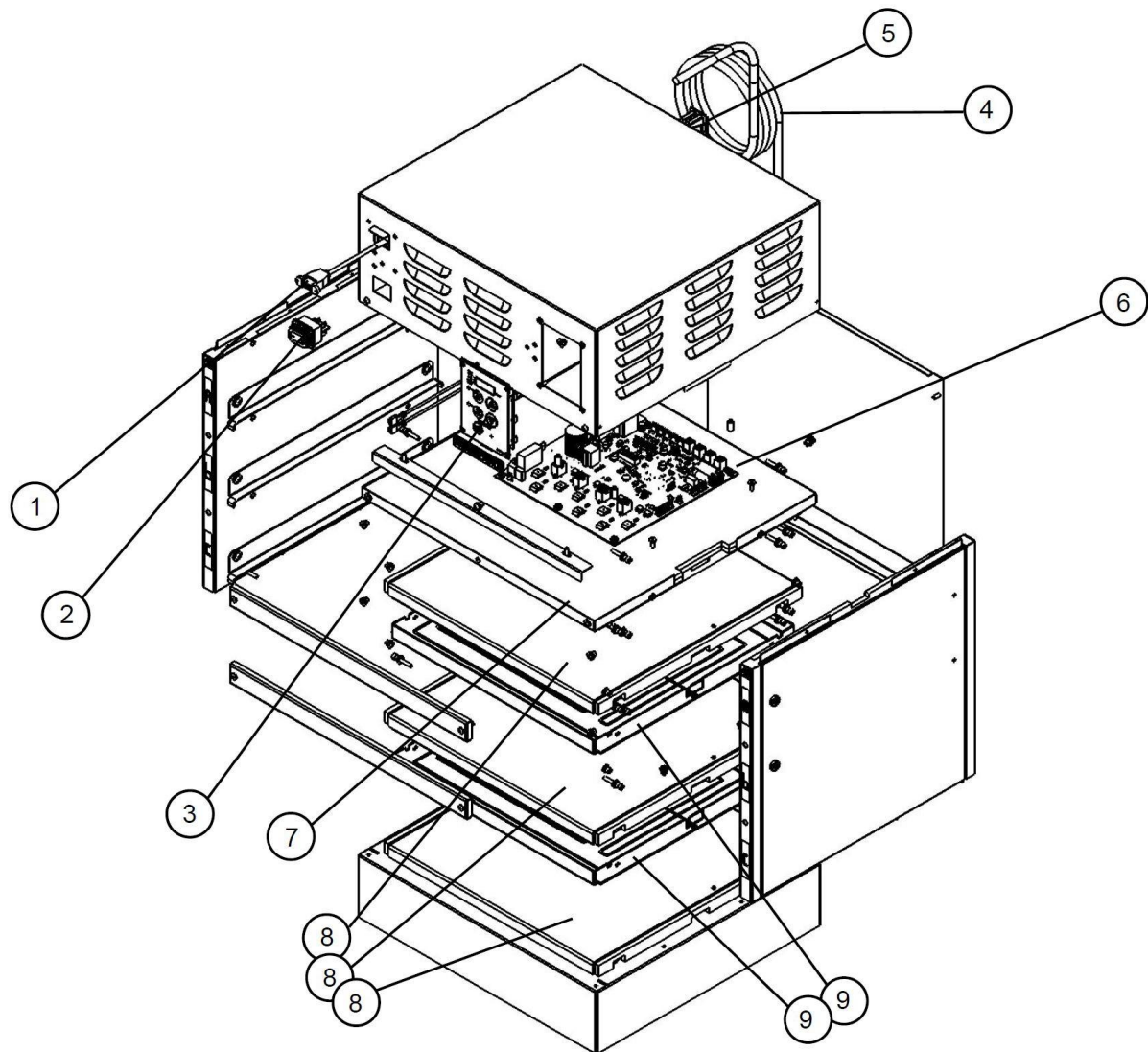
3

Wipe down surface with a damp cloth. Do not use a green Scotch Bright pad, unapproved cleaner, ice or water.

4

Turn power on after all surfaces are dry.

Exploded View and Parts List



Item	Part	Description
1	95-1819S	USB Cord
2	78-233S	Power Switch
3	540-1202S	Kit, Overlay Display
4	72-282S	Kit, Powercord
5	540-1293S	Kit, Power Outlet for Timer

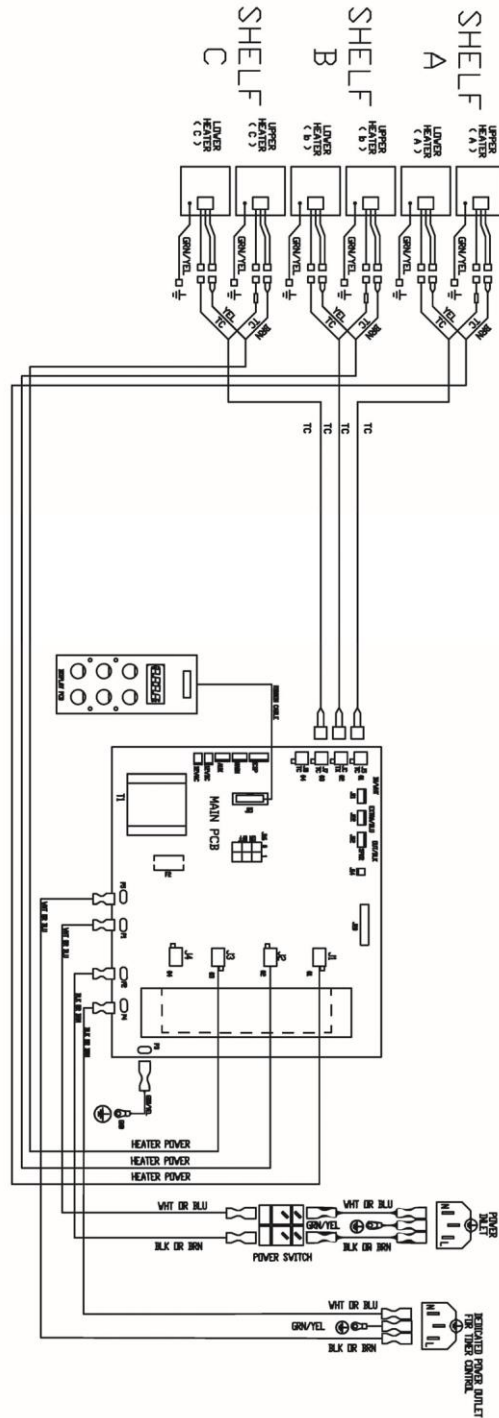
Item	Part	Description
6	541-1404S	Kit, PCB Controller
7	540-1309S	Service Kit, Top Heater
8	540-1258S	Service Kit, Upper Heater
9	540-1255S	Service Kit, Lower Heater

Troubleshooting

PROBLEM	POSSIBLE CAUSE	SOLUTION
A. Display flashes "Opn" & "rEL"	Open relay. Circuit inoperable.	Replace power circuit board.
B. Display flashes "SHr" & "rEL"	Shorted relay. Circuit inoperable. Open heater.	Replace power circuit board. Test heater resistance. (150.2 Ohms)
C. Display shows "LLL"	Temperature is below 75°F. Heater inoperable. Probe inoperable. Relay Inoperable.	Normal display during warm-up. Test heater resistance. (150.2 Ohms) Check for open thermocouple wires from probe. Replace heater/probe assembly.
D. Display shows "HHH" for an extended period of time	Temperature is above 300°F (abnormal operation).	Diagnostic circuit inoperable. Replace power circuit board. See B above.

IMPORTANT: To reset all times and temperatures to the factory settings, turn unit off, press and hold the UP and DOWN ARROW BUTTONS at the same time, turn unit back on. A "P" will appear in the display and all times and temperatures will be reset to the original factory settings.

Wiring Diagram



Revision Log

[illegible]